

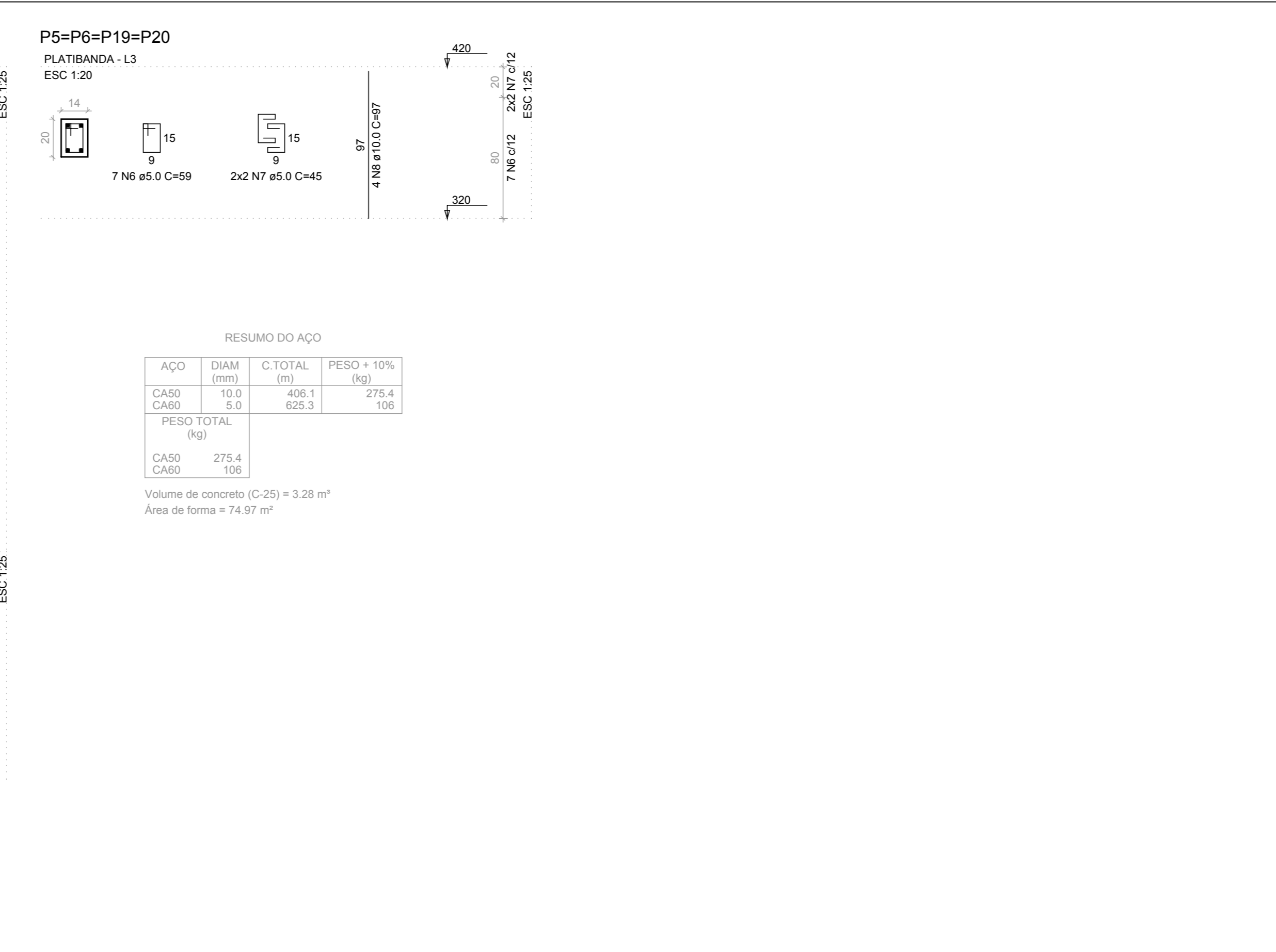
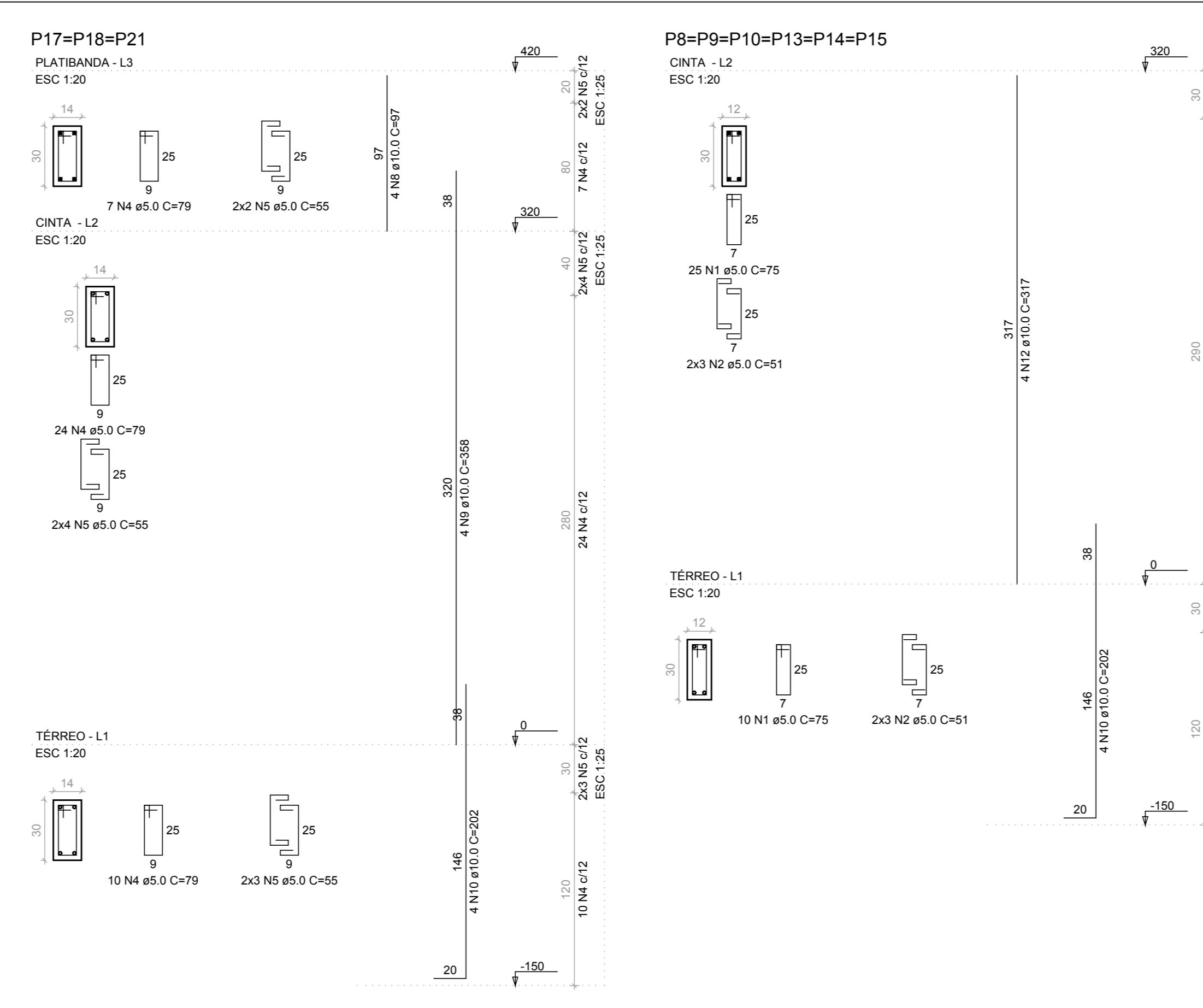
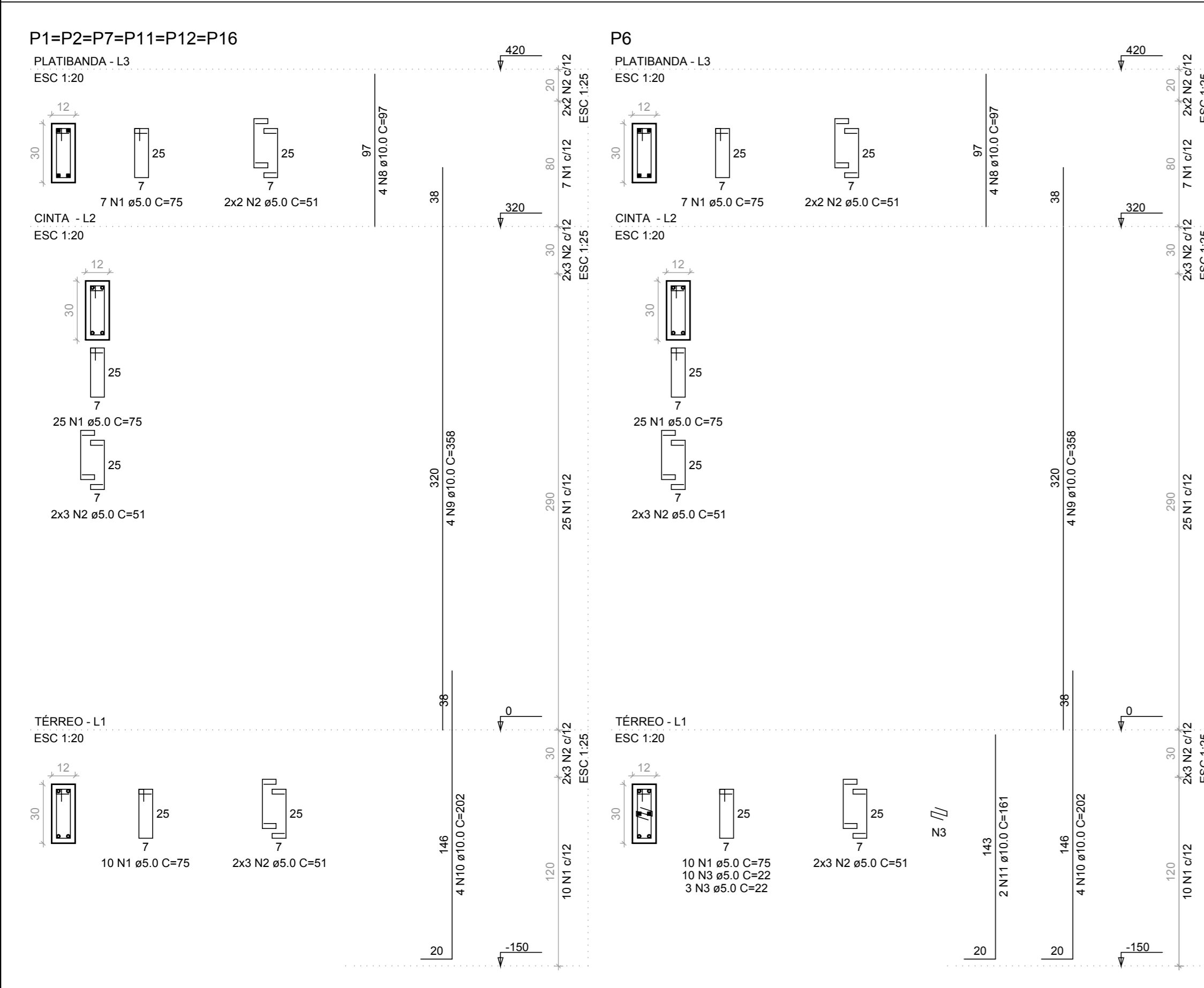
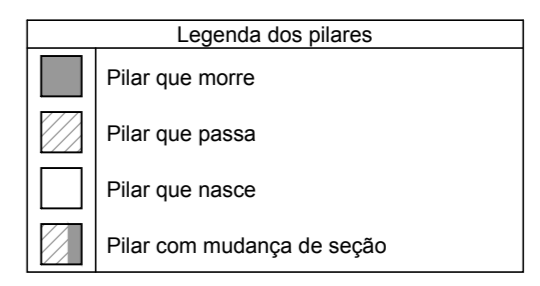
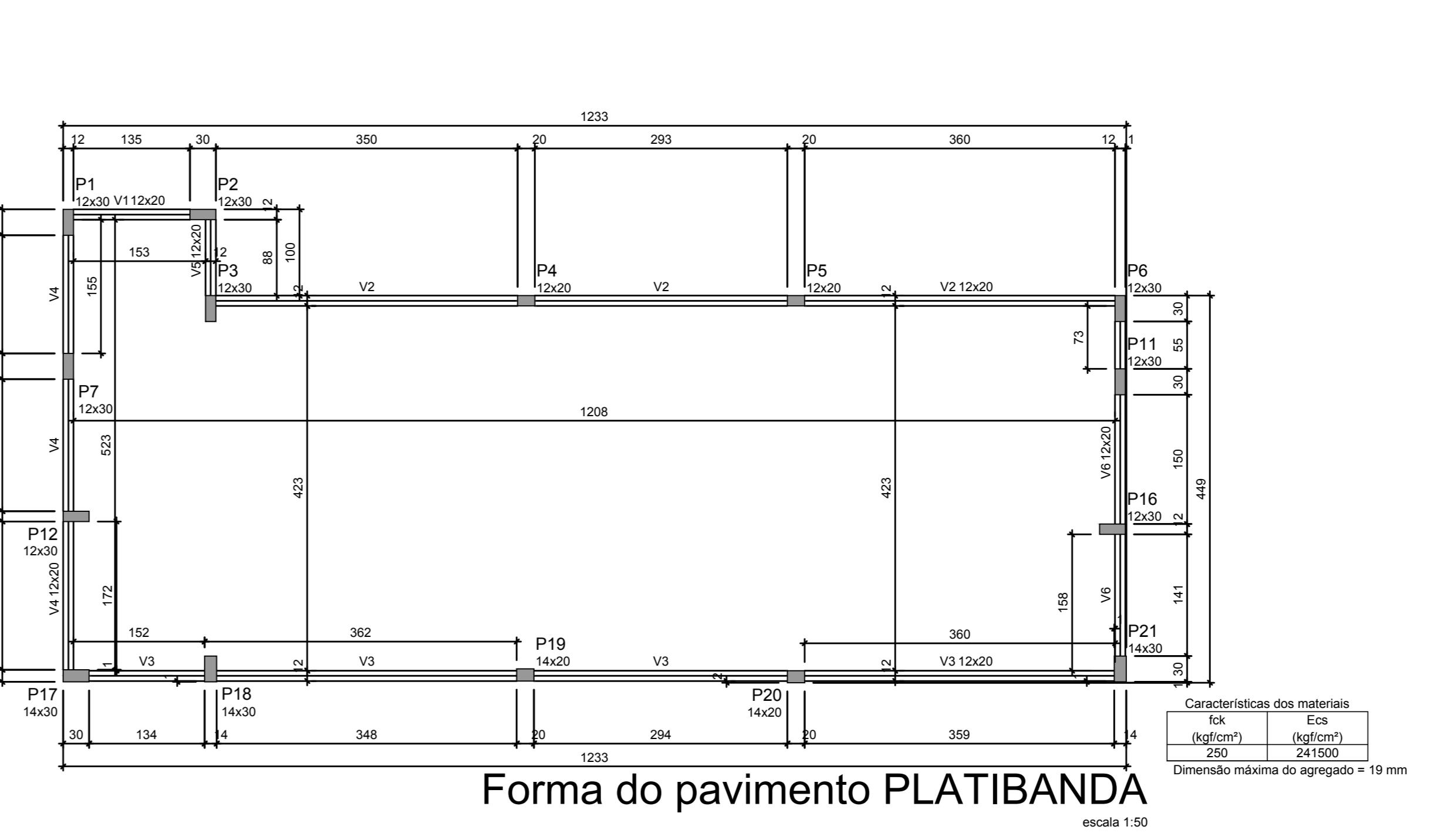
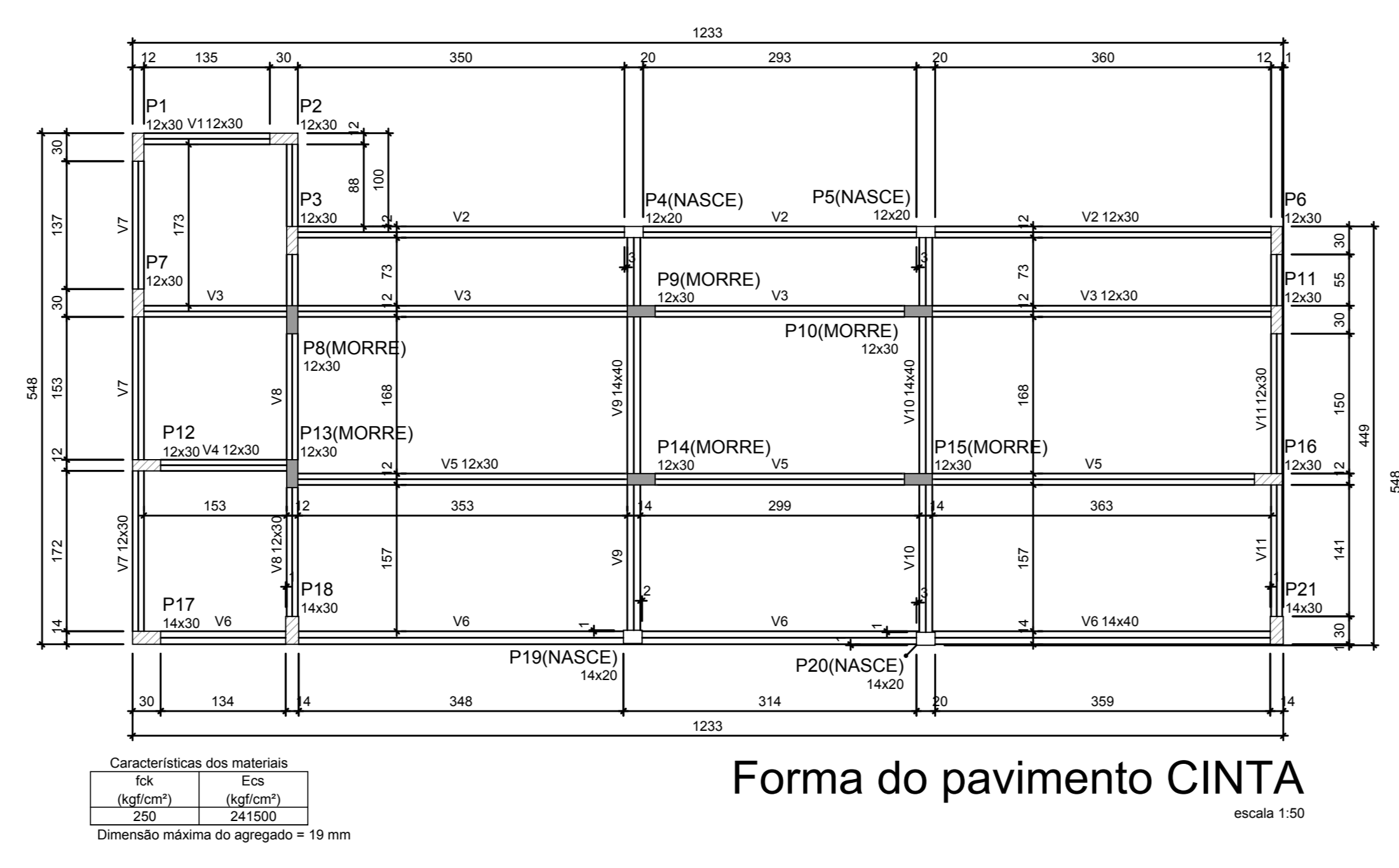
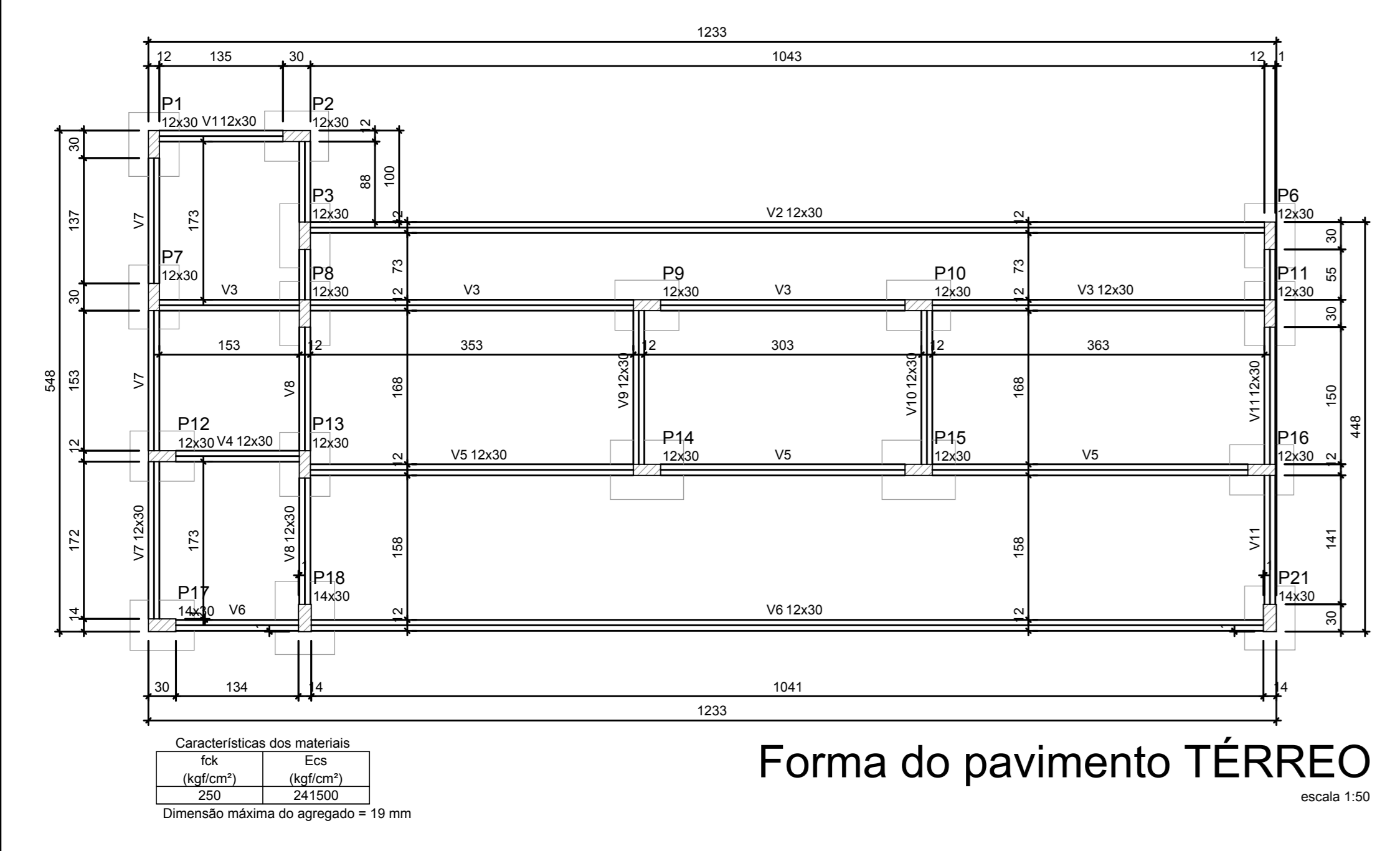
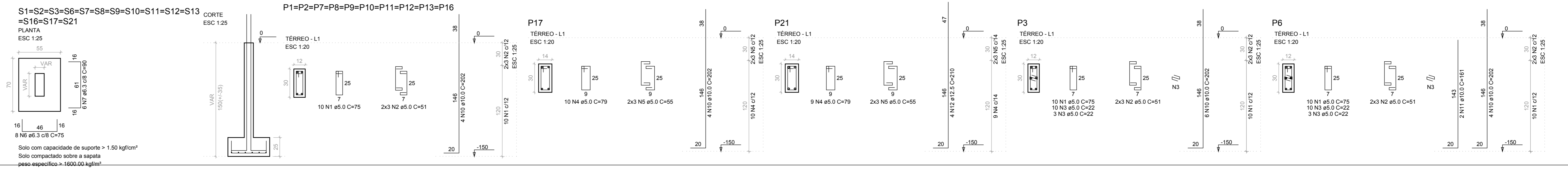
RESUMO DO AÇO

CAISO	DIAM (mm)	C.TOTAL (m)	PESO + 10% (kg)
CAISO	6.3	203.6	54.8
CAISO	8.0	138.8	87.1
CAISO	10.0	186.6	117.2
CAISO	12.5	100.0	156.2
CAISO	16.0	11.2	22.8
CAISO	18.0	5.5	9.0
CAISO	20.0	3.4	7.5
CAISO	25.0	1.0	2.5
CAISO	31.5	0.2	0.5
PESO TOTAL			650.1

Volume de concreto (C-25) = 2.68 m³
Área de forma = 32.52 m²

RELAÇÃO DO AÇO

CAISO	N	DIAM (mm)	QUANT	C.UNIT (cm)	C.TOTAL (cm)
CAISO	1	6.3	140	75	10500
CAISO	2	8.0	84	75	6300
CAISO	3	10.0	52	75	3900
CAISO	4	12.5	22	75	1650
CAISO	5	16.0	5	75	375
CAISO	6	18.0	2	75	150
CAISO	7	20.0	1	75	75
CAISO	8	25.0	1	100	250
CAISO	9	31.5	1	100	315
CAISO	10	10.0	2	100	200
CAISO	11	12.5	1	100	125
CAISO	12	12.5	1	210	210



PROJETO ESTRUTURAL | PRONCHA: 4/2

PROJETO INSTITUCIONAL | FOLHA: A1

OBRA: BILHETERIA | CIDADE: Plum - TO

PROPRIETÁRIO: Prefeitura Municipal de Plum | ENDEREÇO: Rua Dona Ana Ferreira de Carvalho, Estádio Carvão, Plum - TO

DATA: 04/03/2024

QUADRO DE ÁREAS

PROPRIETÁRIO	AUTOR DO PROJETO
Releuz Municipal de Plum	PEYRO FERREIRA DE DELORETO
	Engenheiro Civil
	CREA-TO: 32797/D

CONFORME PROJETO ARQUITETÔNICO

ESCALA INDICADA

1:500
1:200
1:100
1:50
1:20
1:10